

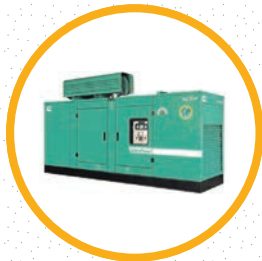


Afri-white

Suited to your comfort



Car Hire



Generator Monitoring &
Power Monitoring Services



Fleet Tracking



BACKGROUND

Afri-white Uganda is a logistics service provider for fleet tracking, fuel monitoring, energy management and transportation services using multi-application solutions fully customized to your standards. Afri-white (U) Ltd was established in 2010, with registered offices located in Kampala. It was formed with the view of delivering first class professional services to the ever demanding needs of clients.

Afri-white Uganda has several unique technologies providing real time remote monitoring and analysis of asset performance, like fuel, engine, electricity, gas, environment, peripherals and variety of sensors. It's line of solutions are offered to cell sites, depot tanks, generators, gas tanks, locomotives, heavy machinery, vehicles and more.

ZON™ CONTROL

The core of Afri-White Uganda's technology is based on the ZON™ Control platform. The proprietary ZON™ Control allows for the development, customization and management of end-to-end applications and services for the Remote Performance Monitoring (RPM) industry. ZON™ Control enables cross-platform multi-application solutions for a variety of users, and a unique modular support of systems tailored to customers' needs.

Managing different asset types requires coping with different technology challenges, but the ZON™ Control platform's flexible technology provides everything under the same umbrella.

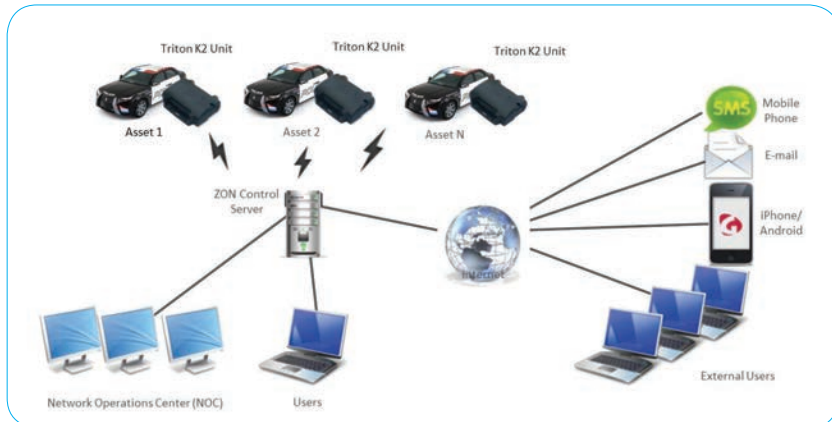
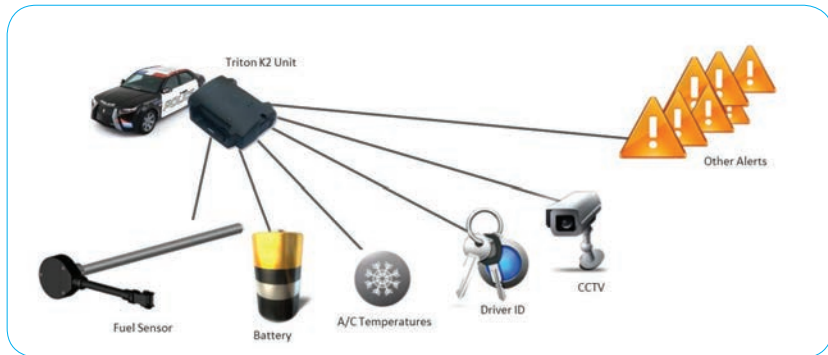
ZON™ Control primary features

- » Real time monitoring and tracking of assets
- » Time, distance and speed monitoring (on mobile assets)
- » Fully functional real time fuel monitoring (theft detection, refueling, fuel consumption, ongoing fuel level and more)
- » Variety of asset sensors monitoring (Ignition, doors, cooling cabin, access control and other inputs)
- » Engine diagnostics
- » Security features – remote immobilizer, remote shut down, alarm, etc.
- » Real time dynamic control panel
- » User defined areas of interest (Geo-fencing) – radius, polygon, routes, and POI's (customers, suppliers, offices, etc.)
- » 2-way messaging with remote asset operator (through Message Data Terminal).
- » User defined automatic alerts
- » Send alerts through e-mail accounts and mobile phones (SMS)
- » Highly detailed, custom made, Operational and statistical reports
- » Advanced authorization module for users management



ZON™ Control FLEET Solution Specifications

The ZON Control solution provides a full performance monitoring solution for the Fleets

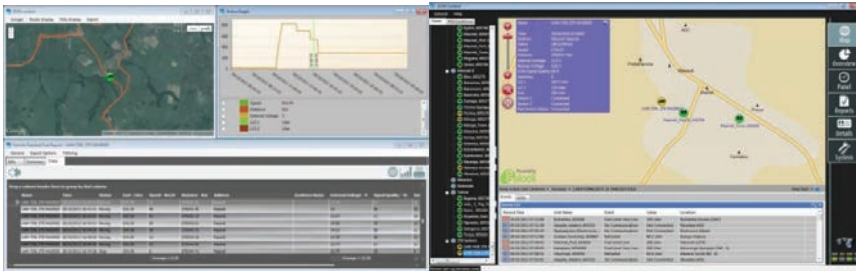


Asset Tracking & Management

- » Real time GPS-based tracking over vector maps using Afri-White Uganda's proprietary GIS engine (there is also an option for using Google Maps).
- » GPS Time, distance and speed monitoring
- » Ignition monitoring
- » Engine immobilization
 - » Remotely from Application
 - » By Driver Authorization
 - » By Driver Alcohol test



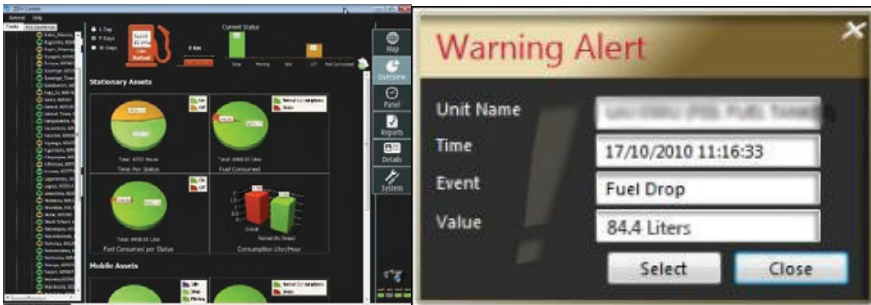
- » Openings monitoring & control
- » Virtual fencing (point, polygon, route)
- » Driver behavior and management
- » Driver ID – via Dallas button or RFID tag
- » Maintenance management
- » Integration with existing SAP system



Real time tracking and tracing Fuel delivery trace and report

Fuel Monitoring

- » Real time fuel monitoring
 - » Fuel level & amount
 - » Fuel dispensed into fuel tank
 - » Fuel consumption rate
 - » Theft detection



Real time fuel monitoring Fuel analysis view

Diagnostics

- » Connection to Asset sensors and/or engine controller (if available)
RPM, coolant temperature, coolant level, oil pressure, voltage, power, and more.



- » Battery management
 - » Connected/disconnected
 - » Battery Voltage monitoring

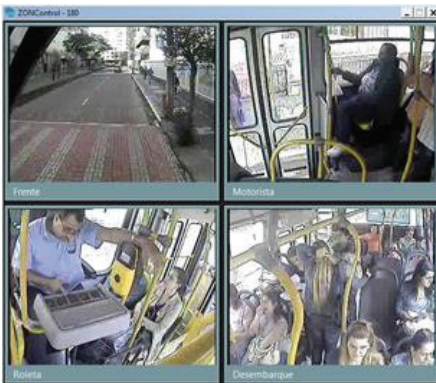
Route Planning

- » Self-customize and plan route
- » Schedule trips

Video Monitoring

- » Real time video surveillance
- » Video on demand
- » Automatic snapshots upon alert

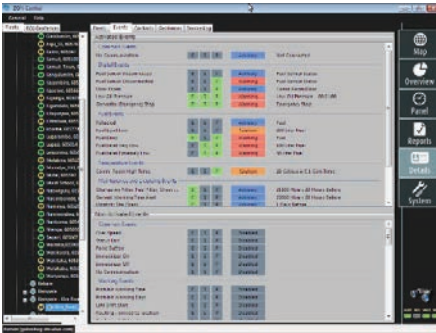
Video on board



Events

- » Event customization (Severity , Time activation, Alert Management)
- » Multi – conditional events , up to three logical rules for generating event
- » **Common Events**
 - » Over Speed
 - » Status Start
 - » Status End

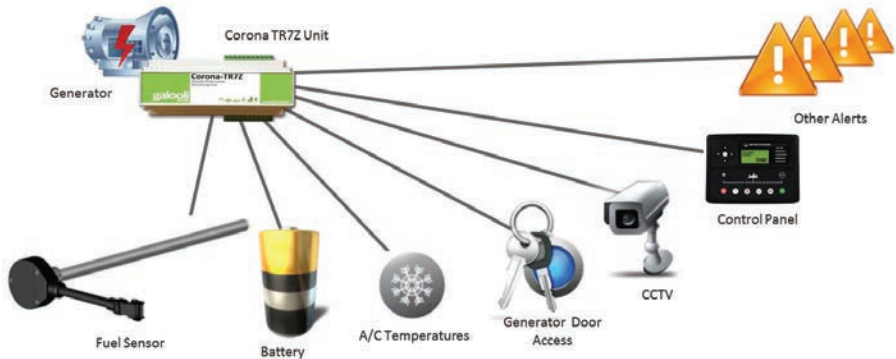
- » Panic Button
- » Immobilizer On
- » Immobilizer Off
- » No Communication
- » **Working Events**
 - » Prohibit Working Time
 - » Prohibit Working Days
 - » Late Shift Start
 - » Routing events
- » Analog Events by Threshold
- » Digital Events On/Off State
- » Fuel events
 - » Refueled
 - » Empty Tank
 - » Fuel Drop
 - » Fuel Level at X Value
- » Temperature Events
- » Temperature exceeds or below threshold determined by user
- » **Maintenance events**
 - » Maintenance and Licensing Events
 - » Maintenance Due Date
 - » Maintenance Due Distance
 - » Maintenance Due Working Hours
 - » Licensing Due Date
 - » Warranty Due Date
 - » Checkup Due Date
- » **Power Control**
 - » Power External Battery Low
 - » Power Reconnected
 - » Power Disconnected
 - » Low Backup Battery
- » **Location Events**
 - » Geofence Enter
 - » Geofence Leave



Alerts configuration

GENERATOR MONITORING

Our cost effective solution is suited to all major brands of generators. The solution enables accurate fuel monitoring, theft prevention, events and alarm management, real time location, run hours, maintenance, diagnostic information from control panel, emergency stop activations and more.



The Corona TR7Z is a complete telecommunication cell site management device incorporating next-generation, super-sensitive GPS technology on GSM/GPRS cellular networks for installation at any cell sites. Messages are transported across the cellular network using enhanced SMS or UDP messaging providing a reliable communications link between the device and ZON™ Control Platform. The Corona TR7Z is designed to dramatically reduce cost of ownership, power and size while providing excellent reliability.

Generator Monitoringnimda2015-07-19T13:18:21+00:00POWER MANAGEMENT



Manage your power grid from ZON™ Control

- » Sub metering for co-location
- » Hybrid monitoring
- » Hybrid power management
- » AC/DC power consumption
- » Rectifier monitoring
- » Batteries monitoring
- » ATS Wireless power amplifier monitoring

view of the cell site to be viewed in real time. A unique feature is the functionality of our alert system. When an alert is sent (eg. intruder alert through the main door), live stream of the video camera is pushed in real time to ZON Control. This allows for quick identification of the problem

SECURITY SOLUTIONS

With the constant development and evolving security challenges, an integrated solution must provide a full monitored cycle to provide maximum information, detection and deterrence. Afri-white Uganda offers a variety of capabilities which allow us to specially design an optimum security architecture adjusted for your specific needs and requirements. Available features include as follows:

- » Access control:
 - » RFID-based smart tags
 - » Electromagnetic locks
 - » Manage authorizations and access
 - » Allow/block access remotely
 - » Door/gate intrusion
- » Remote pepper spray
- » Siren activation
- » Motion detection
- » Variety of additional sensors
- » 24/7 High Quality DVR-based CCTV surveillance system
- » DVR recorders allow a live

TRANSPORTATION SERVICES

Afri-White Uganda is a complete, full service ground transportation company that understands the needs of today's corporate travelers. Our services are both economical for those looking to save on transport costs and professional for organizations and businesses that need the highest quality service and unparalleled dependability.

Corporate & VIP transportation

Afri-white provides professional corporate ground transportation services for town services and upcountry areas for executives, business travelers and groups.

We operate a professional fleet of corporate clean, latest model vehicles that are inspected to ensure the safety of our clients and professionally trained chauffeurs. Our commitment to quality service and meeting the individual needs of each client is key to our success



Airport Transportation

Afri-White provides professional ground transportation to and from Entebbe airport 24/7. We provide reliability and convenience as we look after your luggage, something that you can't do with taxis!

Car Hire

Whether you have a transportation that requires special care, rush delivery, or you just want superior service at a fair market price, you owe it to your business to use Afri-white transportation services.

Professional Drivers for Hire

Experience courteous and personal service from our professionally trained drivers, your vehicle or ours.

Our chauffeurs are professional, trained in hospitality, defensive driving, first aid skills and motor vehicle mechanical and electrical fault diagnostics.

OUR PRODUCTS

TRITON K2



- » Unified unit for all assets
- » Track using GPS SiRFstarIV™, GSM Communication – GPRS + SMS
- » Enhanced processing capabilities
- » Enhanced memory for up to 8,000 transmission logging
- » Back up battery
- » Configurable I/O's for a variety of applications
- » Support SMS command for location request
- » Internal GPS & GSM Antennas
- » Remote updates / full remote firmware upgrades
- » Easy SIM holder, with no need to open firmware upgrades
- » Screws



Triton K2 CLASSIFICATIONS



Features	Essential 	Advance 	Superior 
Operational dashboard	✓	✓	✓
Engine & Scheduled Reports	✓	✓	✓
Users management	✓	✓	✓
Driver Recognition	✓	✓	✓
Configurable events	✓	✓	✓
MultiZON events	✗	✓	✓
Real time fuel monitoring	✗	✓	✓
Engine diagnostics capabilities	✗	✓	✓
Driver behavior module	✗	✗	✓
Live video streaming	✗	✗	✓
History data	6 months	12 months	18 months



CORONA TR7Z

Main Features

- » Unified unit for all assets
- » Standard Din Rail
- » Track using GPS SiRFstarIV™, GSM Communication – GPRS + SMS
- » Enhanced processing capabilities
- » Enhanced memory for up to 8,000 transmission logging
- » Back up battery
- » integrated fuel monitoring solutions
- » Serial RS232/RS485 communication
- » Remote updates / full remote firmware upgrades



- » Panic Button – Pushing on the red button triggers an alarm in the system
- » The module is provided with personal Dallas keys for the drivers

RFID READER

Main Features

- » Smart reader- identifies smart proximity cards.
- » Smart cards – every person who authorizes to enter the site will have unique card
- » Powerful read range
- » Combined with an Electro-magnetic lock – locks the gate with power, and unlock based on command

MULTIFUNCTION KEYPAD



DALLAS KEYS/ PANIC MODULE

Main Features

- » Supports 2 main features in the ZON™ Control application:
- » Driver Identification – Allow users to monitor and control authorized drivers. The system can disable the ignition for unauthorized drivers through an immobilizer module or can be used to monitor drivers for operational needs

Main Features

- » 6-button numeric multifunctional keypad
- » Driver has to enter his/her ID before starting the vehicle.
- » Can be used for disabling ignition for unauthorized drivers using the immobilizer system.
- » The numeric Keypad can also be used for task control where the driver needs to set a task code at the beginning of each trip.



IMMOBILIZER



Main Features

- » External relay for vehicle remote immobilization
- » Ignition control
- » Comes with harness

MILA 7



Main Features

- » Integrated Bluetooth communication for ELM 327 327 connection
- » Integrated CAN bus for:
 - » Truck FMS standard diagnostics
 - » Mobile eye Connection
 - » 3-AXISS accelerometer
 - » General purpose output
 - » Small, Compact and Robust!

ELM 327

Main Features

- » Works with all OBD-II compliant vehicles
- » Wireless (Bluetooth) 5~10

meter

- » Supports Palm, PDA, smartphone, windows/lls fuel level sensor

Main features

- » Capacitive-based fuel level sensors, installed in stationary tanks, and Generators. The LLS is connected to the Corona unit and sends the reading data for further fuel processing

PULSE FLOW METER

Main Features

- » Body with aluminium measuring chamber
- » gear electronic flow meter in acetal resin for controlling the non-commercial dispensing of low, medium and high viscosity fluids including fuel, lubricating oil ETC
- » Free contact signal pulser (reed switch), single channel
- » Repeatability 0.2% loss of pressure <0.5 bar at maximum flow rate

DRIVER INDICATOR LIGHT

Main Features

- » Provide real-time visual feedback to drivers
- » Improve driver behaviour
- » Flashes upon different events such as during harsh acceleration and over-speeding

PRIVATE BUZZER

Main Features

Alert driver when event is triggered (E.g.



Over speeding, harsh acceleration, panic button activation)

TEMPERATURE SENSOR



Main features

- » Monitor real time temperature in rooms
- » Using the ZON Control solution, temperature is monitored automatically, and the user gets alerts on any temperature deviation from the maximum or minimum defined.
- » Constant measurement is presented on the system, and can be viewed as history reports

MOBILE DVR

Main features

- » Delay (0min~6h) shutdown and 24hour scheduled start-up/shutdown configurable
- » Wide-range power input
- » (+6VDC~+36VDC)
- » Each channel of the Mobile DVR supports WD1 (960x576) real-time encoding
- » Standard H.264 video compression
- » Allow connection with one pluggable 2.5-inch SATA disks and one SD/SDHC card
- » Power-off protection of data

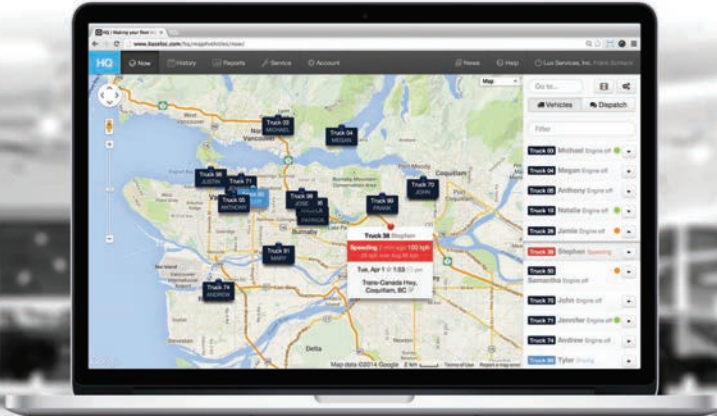
with the built-in redundant power supply

- » Patented hard disk vibration reduction technology
- » Built-in 3G (WCDMA) module
- » Aluminum chassis
- » Built-in high-sensitivity satellite positioning module
- » Interfaces are provided for connecting with external devices

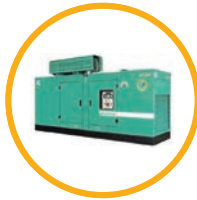
BREATH ANALYZER

Main features

- » Measure alcohol and human breath
- » Uses Fuel Cell Sensor Technology
- » Accuracy established at a Blood alcohol Concentration (BAC)



Car Hire



Fuel Monitoring & Power Monitoring Services



Fleet Tracking



Afri-white

Suited to your comfort

CONTACTS

P.O.Box 35480 Kampala

Bombo Rd Nalubega Complex, Room No. L33B

Mob:0703308030 / 0782284054, Tel: (0)200905380

Email: inquiry@afri-whiteevents.com

Web:www.afri-whiteevents.com